



For Immediate Release

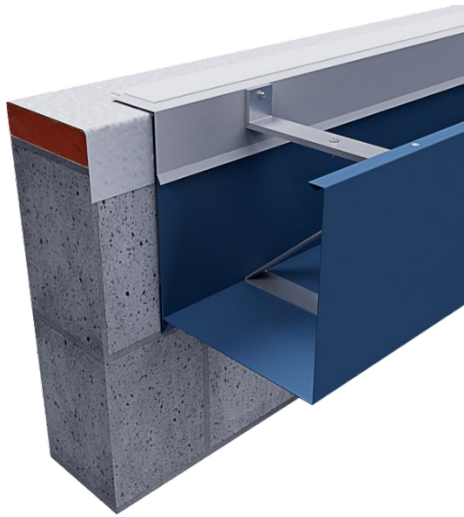
Date: July 10, 2023

Contact: Erin Inhof

(262) 953-2684

erin.inhof@mtl-holdings.com

MTL Holdings New Product Release - XL Gutter



Waukesha, WI.—MTL Holdings has expanded their GT-1 tested product line with the introduction of the XL Gutter – the largest GT-1 tested gutter on the market.

The XL Gutter is the largest gutter available – up to 14” – that is engineered and tested to meet the requirements of the ANSI/SPRI GT-1 Standard for Gutter Systems Used with Low-Slope Roofs. This innovative gutter system incorporates a 2-in. wide, heavy-gauge aluminum z-bracket and a lower mounting hanger to ensure the system stays secure and prevents wind uplift – no external brackets or wind straps needed.

“When developing the XL Gutter, we didn’t want to bring just a larger solution with the same, traditional design to the market,” says Eric Younkin, VP of Product & Engineered Services for MTL Holdings, “We had three key objectives: to meet testing, to improve contractor productivity, and to get people off the edge faster. After years in the making, we’re proud to bring this revolutionary, patent pending gutter system to the roofing industry. The XL Gutter is the largest GT-1 tested solution available, carries a 30-Year, 160 MPH Wind Warranty, minimizes downspouts, and reduces install time anywhere from 30-60%.”

The XL Gutter is available through both Metal-Era and Hickman Edge Systems. Learn more and see what contractors and specifiers are saying about this revolutionary product by visiting the brand websites at www.metalera.com and www.hickmanedgesystems.com.

###

MTL Holdings (www.mtl-holdings.com) is the parent company of Citadel Architectural Products, Hickman Edge Systems, and Metal-Era, LLC. Together, Citadel, Hickman, and Metal-Era hold the broadest portfolio of tested roofing and building envelope securement solutions on the market. Driven by their shared purpose to protect the community at the places they go most, working with architects, consultants, contractors, and distributors, the three brands ensure securement of the building envelope, protecting the most valued asset, its occupants. Learn more by visiting the brand websites at www.citadelap.com., www.hickmanedgesystems.com, and www.metalera.com.